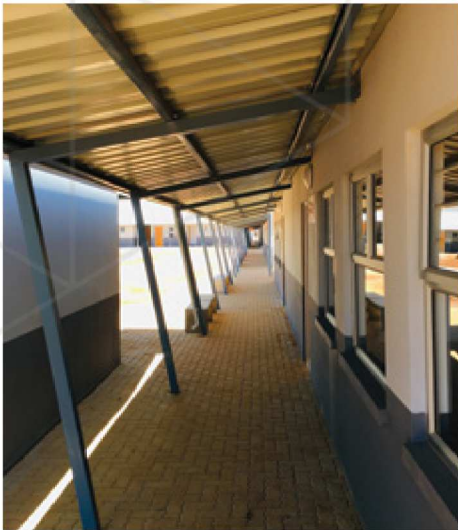




WACO
MODULAR



LIGHT STEEL FRAME





Waco Modular Light Steel Frame (LSF) technology delivers stronger, safer, low-rise buildings that can be individually designed to the customer's unique floor plan. LSF is fast becoming the most feasible alternative building option.

The introduction of Light Steel Frame (LSF) building technology is still relatively new in South Africa. It offers build quality, speed of erection and cost comparability with conventional buildings.

Waco Modular LSF buildings consist of structural wall frames and roof trusses, manufactured from cold-formed light gauge galvanised steel sections on a concrete foundation slab. The frame is then roofed with galvanised or Chromadeck steel sheets. Suspended ceilings with Isotherm insulation are installed.

The high strength of steel results in a safer, wind resistant structure that requires less maintenance. Waco Modular build in accordance to Sans 517 and their LSF buildings carry a 1/2 hour fire rating. Up to 6% extra floor space is created due to reduced thickness of external walls compared with a double skin brick wall.

The steel frames are fabricated under controlled factory conditions before all the components are delivered and assembled on site.

Each structure is signed off by a structural engineer. Only quality certified materials are used.

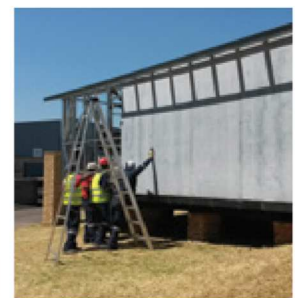
Top 5 Reasons to Use Light Steel Frame Space Solutions



Durable



Cost effective



Moderately fast



Strength



Quality build



Specifications

Foundation	Erected on a reinforced concrete raft foundation slab.
Superstructure Light Steel Frame	90mm engineered steel frame 0.8mm galvanized roll formed steel.
Walls	Tyvek building wrap. Thermal Break material. Insulating cavity batt. 12mm Firestop gypsum internally. 9mm fibre Cement board externally.
Roof & Ceiling	Chromadeck or galvanized metal roof sheets with Isotherm insulation.
Rain Water Management	Chromadeck gutters.
Windows	Aluminium window system. Glass instalments to be in accordance with SABS 0400 part N and SABS0137. 0.00sq.m – 0.75sq.m = 3mm thick. Optional burglar bars.
Doors	External doors – SABS hardwood, framed, solid doors. Internal doors – Masonite hollow core SABS approved, suitable for painting.
Electrical Installation	All internal electrical reticulation work and fittings will be to SABS standards. Electrical compliance certificates (COC) supplied with each building.
Air Conditioning	Available on request. Wall mounted or split units available.
Fittings and Plumbing	All plumbing reticulation work and fittings are included, will be SABS compliant and necessary certification will be provided.
Trims	Painted exterior walls.
Floor Layouts	Various standard floor layouts available. Bespoke designs on request. Detailed specifications are provided with all final proposals.



Waco Modular Footprint

Cape Town

Plot 15, 16, 22 & 23
Industrial Park
Cape Town Ostrich Ranch
Van Schoorsdrif Rd
Philadelphia, Cape Town
Tel: +27 (0) 11 397 8150
Cell: +27 (0) 60 996 5877

Kathu

N14, 7km from Kathu on
Kuruman Road, Shosholoza
Plant Hire Yard, Kathu
Tel: +27 (0) 11 397 8150
Cell: +27 (0) 79 886 9535

Botswana - Gaborone

Plot 12365, Tlokweng,
Gaborone, Botswana
Tel: +27 (0) 11 397 8150
Cell: +27 (0) 72 225 2481

Zambia - Lusaka

Plot 397A/3/B, Kafue Road,
Makeni, Lusaka, Zambia
Tel: +26 (0) 968 491 061
Cell: +26 (0) 968 192 627
Tel: +27 (0) 11 397 8150

Durban

7 Gourlay Drive, Ballito
Service Park, Ballito
Tel: +27 (0) 11 397 8150
Cell: +27 (0) 79 433 1622

Rustenburg

12 Coetzer Street, Industrial
Area, Rustenburg
Tel: +27 (0) 11 397 8150
Cell: +27 (0) 82 464 7743

Mozambique - Palma

EN 247, Destrito de Palma,
Bairro de Ncalanga, Palma,
Mozambique
Tel: +27 (0) 11 397 8150
Cell: +258 84 310 7606

Johannesburg

No 2, New Gold Street,
Boksburg
Tel: +27 (0) 11 397 8150
Cell: +27 (0) 71 360 0721

Pomona (Head Office)

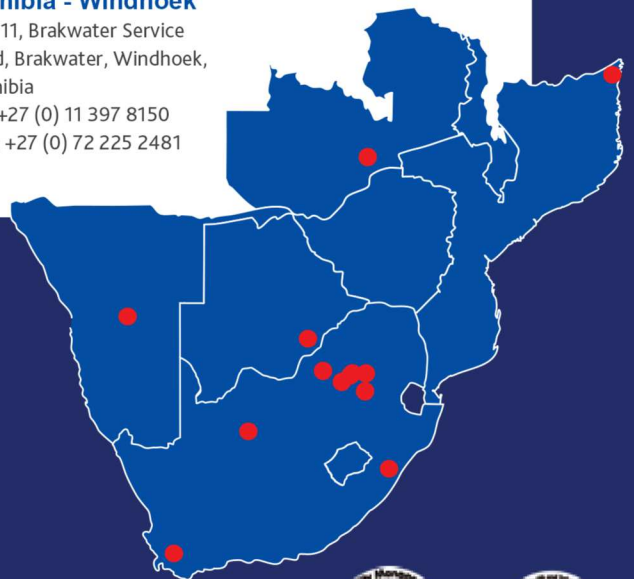
160 Main Street, Pomona
AH, Kempton Park
Tel: +27 (0) 11 397 8150

Secunda

Greenfields Contractors
Area, Greenfields Road,
Secunda
Tel: +27 (0) 17 004 0087
Cell: +27 (0) 72 558 6092

Namibia - Windhoek

Plot 11, Brakwater Service
Road, Brakwater, Windhoek,
Namibia
Tel: +27 (0) 11 397 8150
Cell: +27 (0) 72 225 2481



We are
WACO

Waco Modular | A division of Waco International

Head Office: 160 Main Street, Pomona AH, Kempton Park

Tel: +27 11 397 8150 E-mail: sales@wacomodular.com www.wacomodular.com

