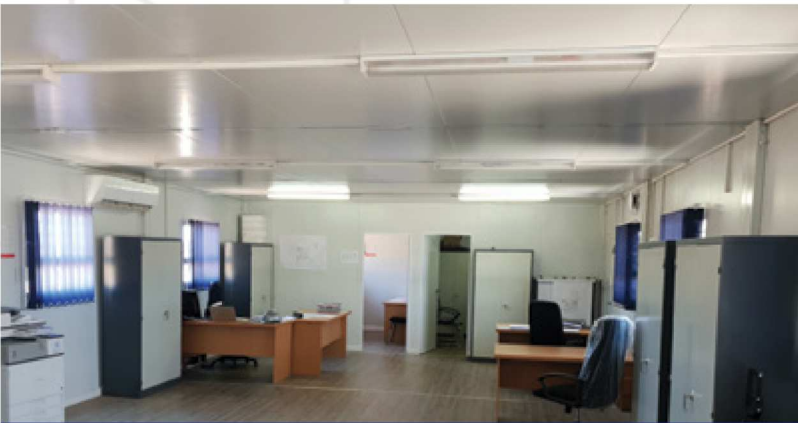




WACO
MODULAR



OFFICES & COMMERCIAL



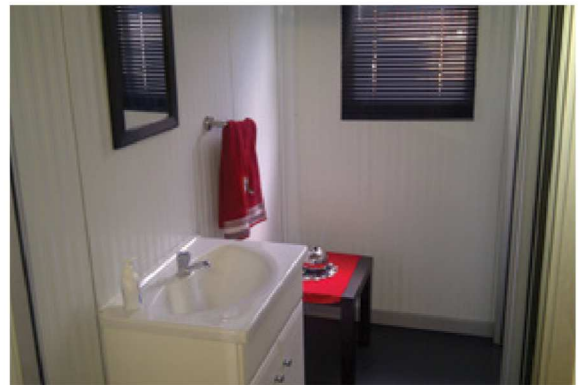
Offices and Commercial Applications

Modular buildings are frequently used for temporary or permanent office space solutions. Waco Modular offer a full bouquet of designs from an on-site sales office through to fully functional multi-storey office blocks.

The flexibility of modular gives you the versatility to change any configuration to meet the growing needs of your business. This includes the ability to scale up or down. Renowned for the quality of their build, Waco Modular deliver an aesthetically pleasing work space that will enhance the productivity of your staff. Waco Modular always deliver on their promise - Smart, Fast Modular.

EzeeSpace - The Innovative, Fast Solution

The innovative design of the EzeeSpace core unit allows Waco Modular to deliver a quality office environment that is larger, higher and wider than standard imported alternatives. EzeeSpace units can be up to three storeys high. The sturdy steel frame ensures a robust building. Interiors can be designed around your requirements, featuring any combination of open-plan spaces, management offices, meeting and board rooms, reception areas, canteen spaces and any other amenities you require.



Cabins

Waco Modular Cabins are very popular when there is a need for immediate office space at remote sites or locations.

They are available in various sizes ranging from 3m x 3m to 3m x 12m and can be sub-divided into separate offices. Cabins are equipped with wall mounted air conditioners. The standard modular cabin office units are self-contained with all fittings and are equipped with insulated wall and roof panels, vinyl floors and aluminium windows and can be supplied with burglar bars and gates if required.



Site Build

Waco Modular provide panelised buildings that are factory fabricated and erected at the site on a reinforced concrete raft foundation slab. The floor plan is therefore totally flexible and can be tailored to the customers exact needs. A site build is a faster, more cost effective solution to traditional brick buildings. As the build is a permanent structure, it is not relocatable.

Light Steel Frame Structures (LSF)

The latest alternative building technology from Waco Modular is an ABT based office solution. The units have a LSF office structure which is aesthetically pleasing with a feel of permanence. The unit is built to SANS 517 (the building standard for light steel frame buildings in South Africa).





APPLICATIONS

Meeting Rooms

Reception

Kitchens

Training

Multi-Storey

Retail

Ablutions

Private Offices

Open Plan Offices

Boardrooms

Fast Food

Gate Security

Call Centres

IT Rooms

Store rooms



Waco Modular Footprint

Cape Town

Plot 15, 16, 22 & 23
Industrial Park
Cape Town Ostrich Ranch
Van Schoorsdrif Rd
Philadelphia, Cape Town
Tel: +27 (0) 11 397 8150
Cell: +27 (0) 60 996 5877

Kathu

N14, 7km from Kathu on
Kuruman Road, Shosholoza
Plant Hire Yard, Kathu
Tel: +27 (0) 11 397 8150
Cell: +27 (0) 79 886 9535

Botswana - Gaborone

Plot 12365, Tlokweng,
Gaborone, Botswana
Tel: +27 (0) 11 397 8150
Cell: +27 (0) 72 225 2481

Zambia - Lusaka

Plot 397A/3/B, Kafue Road,
Makeni, Lusaka, Zambia
Tel: +26 (0) 968 491 061
Cell: +26 (0) 968 192 627
Tel: +27 (0) 11 397 8150

Durban

7 Gourlay Drive, Ballito
Service Park, Ballito
Tel: +27 (0) 11 397 8150
Cell: +27 (0) 79 433 1622

Rustenburg

12 Coetzer Street, Industrial
Area, Rustenburg
Tel: +27 (0) 11 397 8150
Cell: +27 (0) 82 464 7743

Mozambique - Palma

EN 247, Destrito de Palma,
Bairro de Ncalanga, Palma,
Mozambique
Tel: +27 (0) 11 397 8150
Cell: +258 84 310 7606

Johannesburg

No 2, New Gold Street,
Boksburg
Tel: +27 (0) 11 397 8150
Cell: +27 (0) 71 360 0721

Pomona (Head Office)

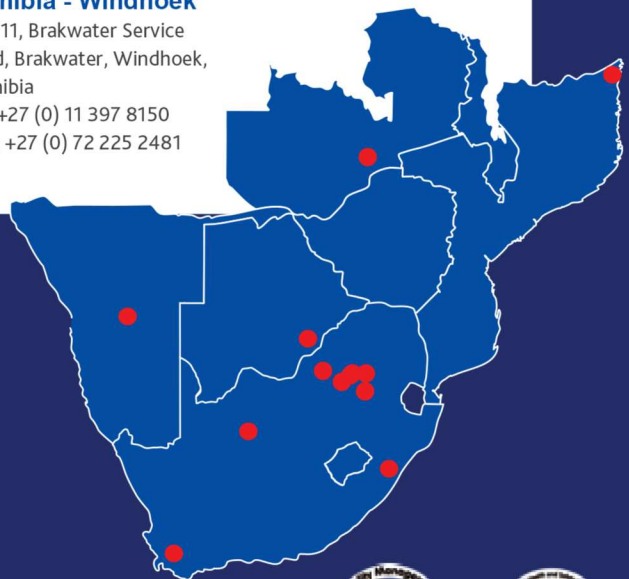
160 Main Street, Pomona
AH, Kempton Park
Tel: +27 (0) 11 397 8150

Secunda

Greenfields Contractors
Area, Greenfields Road,
Secunda
Tel: +27 (0) 17 004 0087
Cell: +27 (0) 72 558 6092

Namibia - Windhoek

Plot 11, Brakwater Service
Road, Brakwater, Windhoek,
Namibia
Tel: +27 (0) 11 397 8150
Cell: +27 (0) 72 225 2481



We are
WACO

Waco Modular | A division of Waco International

Head Office: 160 Main Street, Pomona AH, Kempton Park

Tel: +27 11 397 8150 E-mail: sales@wacomodular.com www.wacomodular.com

