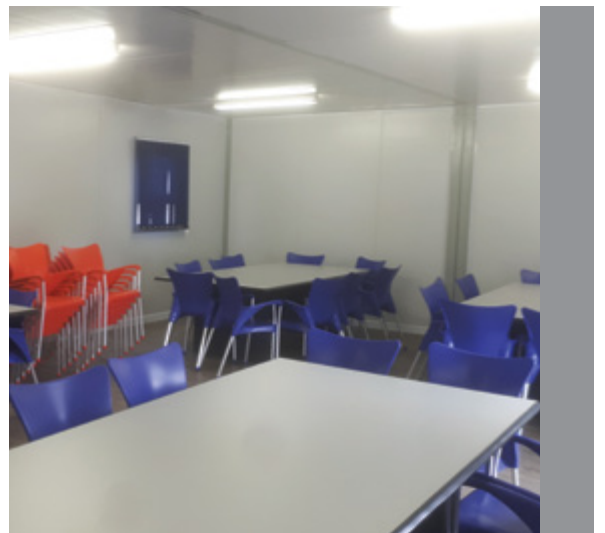




WACO
MODULAR



EZEESPACE VERSION 2





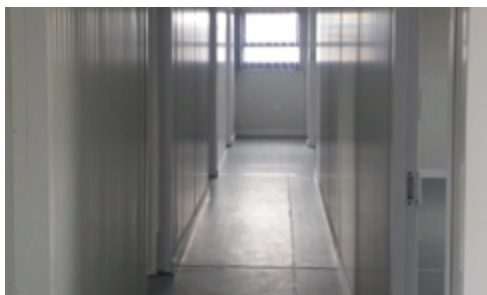
EzeeSpace is a world-class space solution that is leading the modular revolution. The versatile and scalable units can be configured to meet your current, and future, space requirements. A higher than average 2.53m ceiling height delivers a spacious and comfortable interior. The EzeeSpace core units are 3x3, 3x6 and 3x9 metres, allowing you to create almost any footprint.

EzeeSpace units are factory manufactured and transported to your site fully complete, ensuring minimum on-site disruption. Any configuration of units can be joined together to create a single office through to large open plan areas such as classrooms. The interior walling can be easily reconfigured as your space needs change.

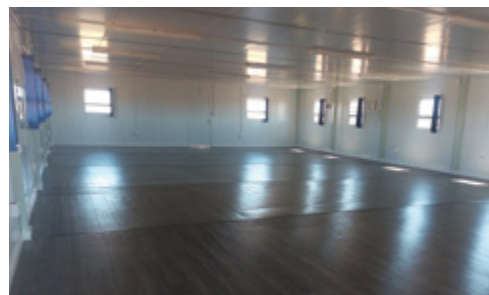
Built to withstand harsh African climatic conditions, EzeeSpace units are durable. The steel exoskeleton ensures a robust structure with a rigid floor. The Chromadeck walls are fully insulated with built-in gutters and downpipes to weather any storm and prevent leaks. There is very little or no maintenance required.

Our stringent quality controlled Waco Modular production facility is ISO 9001 and OHSAS 18001 certified. Every unit is configured to the customers individual requirements with particular attention being paid to the finishes. All these advantages make EzeeSpace a fast and cost effective space solution. Add the proven expertise and experience of the Waco Modular team and you can see why EzeeSpace offers you the Smart-Fast-Modular solution.

Top 5 Reasons to Use EzeeSpace Solutions



Quality and durability



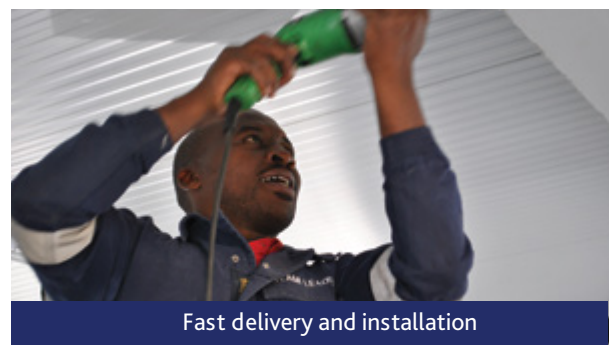
Cost effective solution



Spacious interiors



Flexible and scalable



Fast delivery and installation



Specifications

Chassis	2.5mm steel plate bent into sections and welded together.
Floor	21mm thick CTX108 treated exterior grade shutter ply board on steel supports with heavy-duty vinyl tiles.
Walls	Interlocking White sandwich panel with 40mm Polystyrene (or 40mm Polyurethane) core with 0,5mm Chromadeck on both sides. Flush weather-proof insulated joints. Core material is fire retardant.
Roof & Ceiling	White interlocking sandwich panel with 0,5mm profiled Chromadeck, 60mm core and 0.5mm Chromadeck inner skin, which serve as the ceiling. Interlocking weather-proof joint. Full length clip lock roof sheets to prevent any leaks
Rain Water Management	Gutter and the down pipes are built into the structure. 2 x 100 mm down pipes connected one side of the roof.
Windows	Top hung windows are made from anodized aluminium with 4mm panes. Colour coded aluminium frames can also be supplied.
Doors	Interior –Chromadeck frame with Chromadeck panel infill, fitted 3-lever lock. Exterior – Aluminium with laminated glass panes, fitted with cylinder lock. Exterior – Aluminium or Chromadeck frame with Chromadeck panel infill, fitted 3-lever lock.
Electrical Installation	Building is wired up to an external junction box ready for service connection. All components are SABS approved and are surface or flush mounted. Electrical compliance certificates (COC) supplied with each building.
Air Conditioning	Available on request. Wall mounted or split units available.
Fittings and Plumbing	Can be provided to customer's requirements. Kitchens and bathrooms are all possible.



Waco Modular Footprint

Cape Town

Plot 15, 16, 22 & 23
Industrial Park
Cape Town Ostrich Ranch
Van Schoorsdrif Rd
Philadelphia, Cape Town
Tel: +27 (0) 11 397 8150
Cell: +27 (0) 60 996 5877

Kathu

N14, 7km from Kathu on
Kuruman Road, Shosholoza
Plant Hire Yard, Kathu
Tel: +27 (0) 11 397 8150
Cell: +27 (0) 79 886 9535

Botswana - Gaborone

Plot 12365, Tlokweng,
Gaborone, Botswana
Tel: +27 (0) 11 397 8150
Cell: +27 (0) 72 225 2481

Zambia - Lusaka

Plot 397A/3/B, Kafue Road,
Makeni, Lusaka, Zambia
Tel: +26 (0) 968 491 061
Cell: +26 (0) 968 192 627
Tel: +27 (0) 11 397 8150

Durban

7 Gourlay Drive, Ballito
Service Park, Ballito
Tel: +27 (0) 11 397 8150
Cell: +27 (0) 79 433 1622

Rustenburg

12 Coetzer Street, Industrial
Area, Rustenburg
Tel: +27 (0) 11 397 8150
Cell: +27 (0) 82 464 7743

Mozambique - Palma

EN 247, Destrito de Palma,
Bairro de Ncalanga, Palma,
Mozambique
Tel: +27 (0) 11 397 8150
Cell: +258 84 310 7606

Johannesburg

No 2, New Gold Street,
Boksburg
Tel: +27 (0) 11 397 8150
Cell: +27 (0) 71 360 0721

Pomona (Head Office)

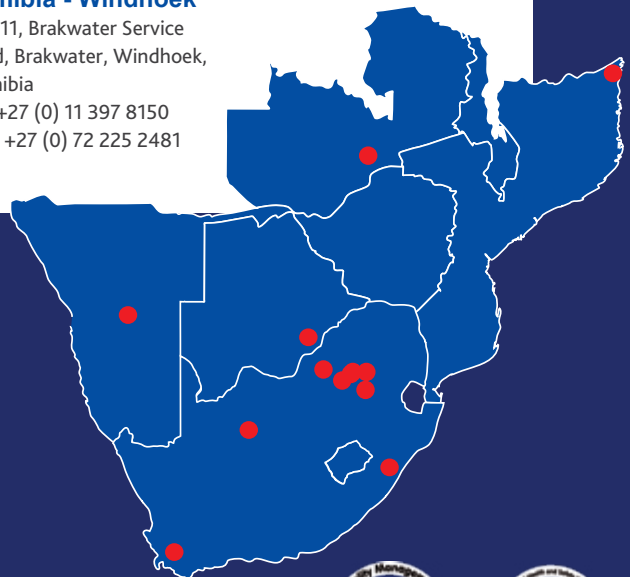
160 Main Street, Pomona
AH, Kempton Park
Tel: +27 (0) 11 397 8150

Secunda

Greenfields Contractors
Area, Greenfields Road,
Secunda
Tel: +27 (0) 17 004 0087
Cell: +27 (0) 72 558 6092

Namibia - Windhoek

Plot 11, Brakwater Service
Road, Brakwater, Windhoek,
Namibia
Tel: +27 (0) 11 397 8150
Cell: +27 (0) 72 225 2481



We are
WACO

Waco Modular | A division of Waco International

Head Office: 160 Main Street, Pomona AH, Kempton Park

Tel: +27 11 397 8150 E-mail: sales@wacomodular.com www.wacomodular.com

